


Fairleads

Heavy Duty Fairleads
To Suit up to 200 Tonne

BUILT TOUGH, DESIGNED TO LAST!



Our expert sales and customer Service team can advise you on the Best product to suit your needs.
Contact Neumann Equipment today.

 **(07) 5589 9746**

Fairleads

Neumann Equipment 4 roller fairleads are designed and manufactured from high quality components for harsh environmental conditions, providing years of dependable service. We specialise in custom built fairleads to satisfy winching requirements that meet relevant marine/industry standards.

All of our 4 roller fairlead designs are verified using Finite Element Analysis (FEA), manufactured and tested to meet industry standards. They are Built Tough and Designed to Last!

Standard Inclusions:

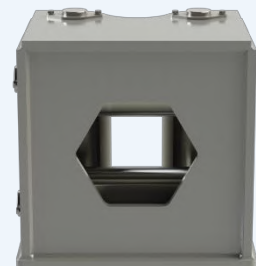
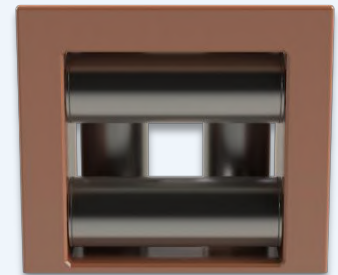
- Carbon steel construction.
- 4 roller design is standard.
- Stainless steel pins.
- Bearing arrangement to suit application.
- Grease points to suit.
- Pins and rollers sized according to loading.
- Boltable mount.
- All metal components are grit blasted and primed with two-pack epoxy primer and finished with heavy-duty two-pack epoxy polyamine industrial coatings.

Available Options:

- To suit line-pull capacities – up to 200,000kg.
- Stainless steel frame construction.
- Weld down base mounting.
- Composite rollers for synthetic rope.
- Removable top plate to allow insertion of rope.
- 3 roller version, ie no top roller.

Please contact us by phone or email to discuss your fairlead requirements.

4 Roller Fairleads Examples



NEUMANN EQUIPMENT

13 Nuban Street, Currumbin, Queensland 4223 Australia
PO Box 8, Currumbin, Queensland 4223 Australia
+61 7 5589 9746

equipment@neumann.com.au
neumannequipment.com.au



NEUMANN EQUIPMENT